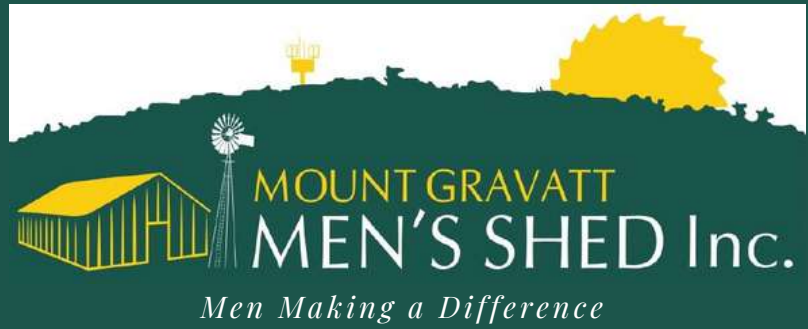


# SHED TALK

THE NEWSLETTER OF THE  
MT. GRAVATT MEN'S SHED

VOLUME 15 SEPTEMBER 2024 NO.9



L-R: Dave Tate, Allan Wallace, Peter Tyley, Jim Chalmers,  
Lionel Armitstead, David Stubbs and Fred Darvill

The visit by the Federal Treasurer, Jim Chalmers on 24th July deserved more recognition so hence this image is the cover for the September Newsletter. He is now aware of the funds required to extend the shed to the west of our existing structure. Communications with our Treasurer should be forthcoming.

Editor.

## Vision

*To provide a facility where men of all ages can feel comfortable and gather together to spend time socially, as well as in a practical manner, by participating in constructive endeavours that develop self esteem.*

PRINTED COURTESY OF COUNCILOR KRISTA ADAMS  
& THE HOLLAND PARK WARD OFFICE

## IN THIS ISSUE

- [President's Ponderings](#)
- [Letters to Editor](#)
- [Social News](#)
- [Around the Shed](#)
- [Brewery Visit](#)
- [Martin Wood Neurosurgeon](#)
- [Art / Painting](#)
- [Welfare](#)
- [Father's Day Event](#)
- [Bee Hives](#)
- [Chess / Elgin Men's Shed, USA](#)
- [Lindeberg Cartoon](#)
- [Music / Guitar](#)
- [Photography](#)
- [Social Meeting Minutes](#)
- [Humour](#)
- [October Calendar](#)



**FREE**

# SENIOR'S EXPO

- ✓ Home & Personal Safety
- ✓ Health & Wellbeing
- ✓ Government Services
- ✓ Social Sports & Recreation

**Wellers Hills Bowls Club**  
34 Esher Street, Tarragindi

**31st October 2024**  
Session 1 - 10am to 12pm  
Session 2 - 1pm - 3pm

**REGISTER NOW**  
Scan the QR code to register

**Cr Krista Adams**  
Deputy Mayor  
Councillor for Holland Park Ward

**Cr Fiona Cunningham**  
Councillor for Coorparoo Ward  
3403 2101

**Cr Krista Adams**  
Deputy Mayor  
Councillor for Holland Park Ward

**Cr Fiona Cunningham**  
Councillor for Coorparoo Ward  
3403 2101

**FREE**

# SENIOR'S EXPO

- ✓ Home & Personal Safety
- ✓ Health & Wellbeing
- ✓ Government Services
- ✓ Social Sports & Recreation

**Wellers Hills Bowls Club**  
34 Esher Street, Tarragindi

**31st October 2024**  
Session 1 - 10am to 12pm  
Session 2 - 1pm - 3pm

**REGISTER NOW**  
Scan the QR code to register

**Cr Krista Adams**  
Deputy Mayor  
Councillor for Holland Park Ward

**Cr Fiona Cunningham**  
Councillor for Coorparoo Ward  
3403 2101

**Cr Krista Adams**  
Deputy Mayor  
Councillor for Holland Park Ward

**Cr Fiona Cunningham**  
Councillor for Coorparoo Ward  
3403 2101

**FREE**

# SENIOR'S EXPO

- ✓ Home & Personal Safety
- ✓ Health & Wellbeing
- ✓ Government Services
- ✓ Social Sports & Recreation

**Wellers Hills Bowls Club**  
34 Esher Street, Tarragindi

**31st October 2024**  
Session 1 - 10am to 12pm  
Session 2 - 1pm - 3pm

**REGISTER NOW**  
Scan the QR code to register

**Cr Krista Adams**  
Deputy Mayor  
Councillor for Holland Park Ward  
3403 7791

**Cr Fiona Cunningham**  
Councillor for Coorparoo Ward  
3403 2101

Lord Mayor Adrian Schirmer, Cr Fiona Cunningham & Cr Krista Adams

**FREE**

# SENIOR'S EXPO

- ✓ Home & Personal Safety
- ✓ Health & Wellbeing
- ✓ Government Services
- ✓ Social Sports & Recreation

**Wellers Hills Bowls Club**  
34 Esher Street, Tarragindi

**31st October 2024**  
Session 1 - 10am to 12pm  
Session 2 - 1pm - 3pm

**REGISTER NOW**  
Scan the QR code to register

**Cr Krista Adams**  
Deputy Mayor  
Councillor for Holland Park Ward  
3403 7791

**Cr Fiona Cunningham**  
Councillor for Coorparoo Ward  
3403 2101

Lord Mayor Adrian Schirmer, Cr Fiona Cunningham & Cr Krista Adams

**DRAWN ON 2ND DECEMBER**

# XMAS RAFFLE

**2ND**  
BOWL SET  
VALUE \$350

**FIRST PRIZE**  
CUBBY HOUSE  
VALUE \$1550

**3RD**  
WHEELBARROW + \$150 IN VOUCHERS  
VALUE \$250

**TICKETS \$2 EACH**

MOUNT GRAVATT MEN'S SHED Inc.

**DRAWN ON 2ND DECEMBER**

# XMAS RAFFLE

**2ND**  
BOWL SET  
VALUE \$350

**FIRST PRIZE**  
CUBBY HOUSE  
VALUE \$1550

**3RD**  
WHEELBARROW + \$150 IN VOUCHERS  
VALUE \$250

**TICKETS \$2 EACH**

MOUNT GRAVATT MEN'S SHED Inc.

**DRAWN ON 2ND DECEMBER**

# XMAS RAFFLE

**2ND**  
BOWL SET  
VALUE \$350

**FIRST PRIZE**  
CUBBY HOUSE  
VALUE \$1550

**3RD**  
WHEELBARROW + \$150 IN VOUCHERS  
VALUE \$250

**TICKETS \$2 EACH**

MOUNT GRAVATT MEN'S SHED Inc.

**DRAWN ON 2ND DECEMBER**

# XMAS RAFFLE

**2ND**  
BOWL SET  
VALUE \$350

**FIRST PRIZE**  
CUBBY HOUSE  
VALUE \$1550

**3RD**  
WHEELBARROW + \$150 IN VOUCHERS  
VALUE \$250

**TICKETS \$2 EACH**

MOUNT GRAVATT MEN'S SHED Inc.



# About us

## Patrons

**Body** Dr Brian Kable

**Mind** Prof Grant Devilly

**Spirit** Rt Rev Doug Stevens

## Management Committee

**President** Peter Tyley

**Secretary** Neville O'Brien

**Assistant Secretary** Lionel Armitstead

**Minutes Secretary**

**Treasurer** John Wild

**MC Members** Bart McKnight, Dave Tate,  
Kevin Schneidewin

## Area Co-ordinators

**Building & Grounds** Dave Tate

**Workshop Projects** Fred Darvill

## Community

**Projects** Bart McKnight

**Office** Jim Wiseman

**Recreation Room** Colin Smith

**Workshop** Lloyd Akeroyd

**Welfare** Steve Fluerty

## Other

**Music Coordinator** Terry Thomson

**IT Coordinator** George Parkinson

**Deputy IT Coordinator** Ross Hall

**Assistant Treasurer** John Bettenay

**Assistant Welfare** Bruce Stafford

**Woodworking Facilitator** Lloyd Akeroyd

**Maintenance Subcommittee** Dave Tate

**Wood Machinery** Lloyd Akeroyd

**Immediate Past President** John Wicks

**Test & Tag** Brad Gibson, Nev O'Brien

## Editorial Team

**Editor** Wayne Hansen

**Proof Readers** Neil McPhail, Reuben Egan

**Editorial Assistants** Kim Tvede, Terry  
Thomson

**Email** newsletter@mtgravattmensshed.org.au

## Mail

Secretary

Post Box 239

Mansfield Qld 4122

**Phone Shed Office** (07) 3343 2216

www.mtgravattmensshed.org

**Email:** secretary@mtgravattmensshed.org.au



# Lion-el's Ponderings

## **Ponderings – From a Novice**

Peter threw me the challenge to fill in for him while he is having a holiday. So I ponder on the challenge and think about what I should say. I have only been a member for two and a half years but have witnessed and experienced many positive aspects of the Shed.

It amazes me at times the comradery that has developed in some of the group activities. Similarly I see many members that are very experienced and very skilful in a wide range of activities. This allows the Shed to offer a wide range of activities. I have spoken with a few members from other sheds and they are envious of the variety of activities that are offered within the Mt Gravatt Men's Shed.

There still is room for improvement to build on this foundation. Steve Fluerty our Coordinator of the Welfare Group has stimulated recent discussions within the Management Committee meetings on how we can improve the welcoming of new members. For the long-term sustainability of the Shed we need to ensure that they have early opportunities in experiencing the mateship, support and skill development that is available and is happening. Kevin Schneidewin is working on improving the communication between groups and endeavouring to get all Activity Coordinators and Leaders to meet on a regular basis to share the positive opportunities of more interlinking of the groups.

I encourage all members to talk to new members, make them feel welcome and discuss with them the opportunities available in the Shed. The MC is keen to receive any ideas you may have to improve the interlinking of groups to help the continuous improvement of the Shed.

*Lionel  
Armitstead* 



Bert Savage



### MAGPIES

In search of pastures green was the trio's intent,

To see the world for sixpence was the go.

Leave the city for the country earn a quid where er'e they went

But the downside of this jaunt they didn't know.

Two days away, the second night they're out on the track,

Night fell so fast they scarce had time to see

Looking for someplace to rest, recover, hit the sack.

When across a right-side ditch, they saw a tree.

They dropped their packs down slowly on the scattered sticks and stones,

The gum tree's shady branches covered wide.

Their main concern this moment was to rest their weary bones

Unconscious of the dangers there inside.

With groundsheet down and blankets on, discomfort mattered not,

Above them, leaves and branches sag and sway

A score of roosting magpies who had always owned this spot,

Would make their message clear by light of day.

Just hours before, our feathered friends had feasted fit to burst

They were never quite so fat or so well fed.

That day they'd dined on mulberry fruit with colour often cursed,

And twenty-four were perched above their bed.

Throughout the night the silent fall of flack from the feathered foe,

All dreams would end by dawn when they would see,

The message that the magpies left, bombarding all below,

They had their soft grey blankets dyed for free.

The years have made great changes to the track down Wagga way,

A highway now is running north and south.

But my memories will stay constant, and I am pleased to say,

That my blanket then was covering up my mouth.

This is a true story by Bert Savage. Bert was one of the men.

Hi Wayne,

Is any member willing to run classes on computing? Some members are very keen to learn the basics about Microsoft Word, Excel and even how to edit photos.

Michael Hayes

*Michael - you could approach the Photography Group as they are talking about having demonstrations/lessons on Editing Photos. Editor*



## DADS construction

Dave Tate

This week the team DADS construction that's Dad, Allan, Dave and Steve carried out some repairs to Steve's home . Steve's house built around 1968 had a problem with the roof hanging beam sagging and in turn the plasterboard ceiling in the Dining room also sagged.

On advice from L A Tate Plasterers (That's older brother Len Tate), it was decided to remove a section of the ceiling sheet and check what the problem was.

When the house was built the hanging beam from the internal wall was short of the external top plate by 100mm and a packing plate was installed to extend the beam to the top plate.

Over the years the weight of the roof transferred from the under purlin through the struts forced the hanging beam to sag.

The solution was to install a steel bracket bolted to the beam and extend to the top plate, then replace the section of plasterboard.

With the help of some Acro props the ceiling was lifted to its original level level and all is now good.



# Social News



## Congratulations - Ian and Janet Stehbens

### A Good Marriage

- A good marriage must be created
- In the art of marriage the little things are big things
- It is never being too old to hold hands
- It is remembering to say I LOVE YOU at least once each day
- It is never going to bed angry
- It is having a mutual sense of values and common objectives
- It is standing together facing the world
- It is forming a circle of love that gathers in the whole family
- It is speaking words of appreciation and demonstrating gratitude in thoughtful ways
- It is having the capacity to forgive and forget
- It is giving each other an atmosphere in which each can grow
- It is finding room for the things of the spirit
- It is not only marrying the right partner
- It is being the right partner



Some of the Saturday gathering group having dinner at Mt Gravatt Bowls Club. This is a once a month outing.



# Around the Shed



Social Meeting Winner of the meat tray - Andrew



Greg painting garden benches



Patrick repairing old broom



Fred and Russell assembling garden seat



Patrick and Lindsay making Mahjong tile holders



Dennis and Andrew sanding chair sides



Dennis and Patrick restoring old school bench





Putting the new Multi-Function Table MFT to use



Proof of Concept-STEM Project of pipes and connectors for after school care



New Air Vent for ETG room



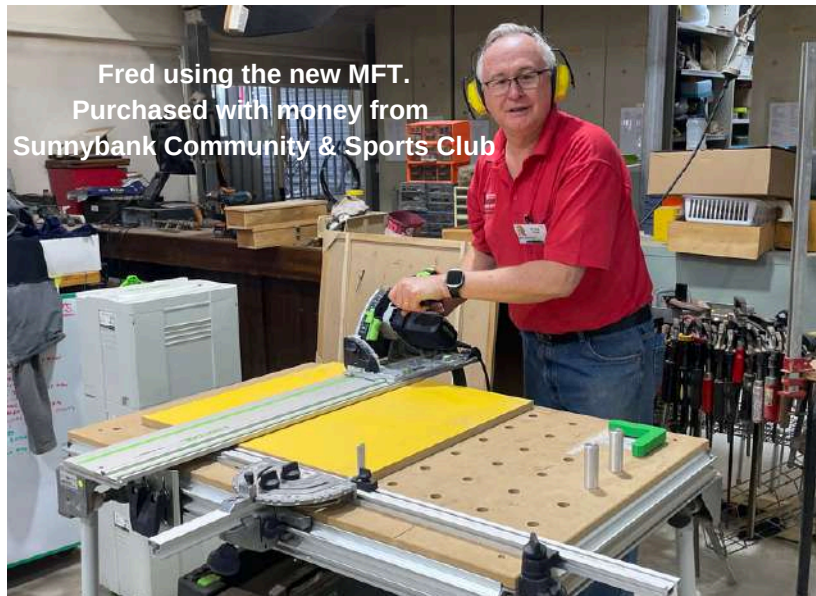
3D Printing parts for the MFT's



Dennis, Greg, Patrick and Russell with the finished bench restoration



Dave removing the Yellow Line for a Loading Bay



Fred using the new MFT. Purchased with money from Sunnybank Community & Sports Club

Cover



# Revel Brewery at Morningside

Kevin Schneidewin

On Saturday 31st August, a group of 18 members and partners took part in this travel group activity. We assembled at the shed at 10 am and departed deviously to an unknown destination.

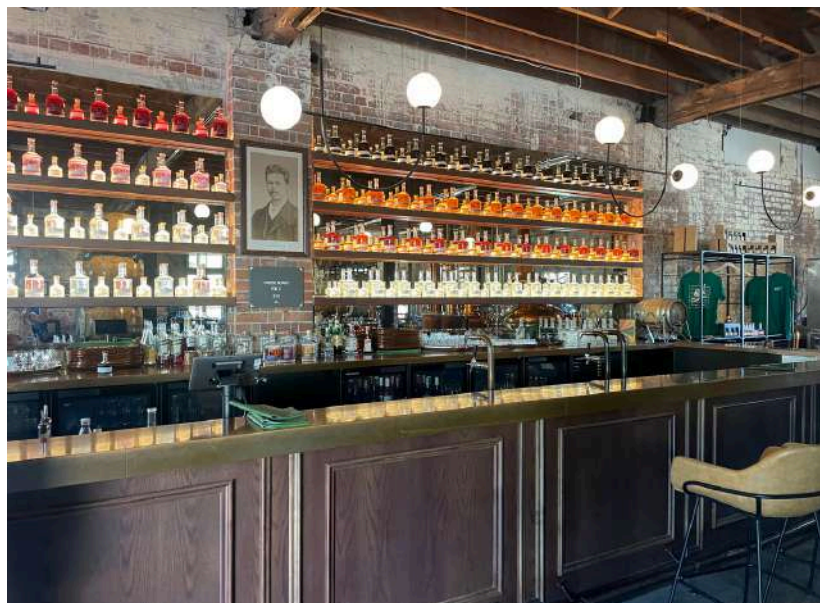
Instruction sheets showed the roads to follow and asked many questions about landmarks on the way. A coffee stop at Manly ensured that Tony G and the rest got their daily caffeine dose.

The trip to the destination at the Rivermakers Centre at Morningside took about one and a half hours, which under normal circumstances would take about 20 minutes.

The destination is a fascinating place. A large amount of capital has been spent on what is an essentially unknown property at this point, however with some publicity it will no doubt become a great entertainment space for that part of Brisbane. The old limeworks part of the property has an interesting history, with a beautifully preserved brick chimney. The brewery had an interesting selection of ales and a good lunch menu.

The distillery produces gin and rum varieties and a very nice coffee liquor. The Cox's crew won the rally by a tiny margin and shared the chocolate prize.

Overall a very successful day out .





# Dr Martin James Wood

M.B., Ch.B., BMedSc(Hons), F.R.A.C.S.

Neurosurgeon

**The Guest Speaker for the Social Meeting on October 14**

Dr Martin Wood completed his undergraduate training at Aberdeen University in Scotland. He undertook advanced training in Neurosurgery at The Royal Children's Hospital and St Vincent's Hospital in Melbourne, and The Princess Alexandra Hospital and The Mater Children's Hospital in Brisbane followed by post fellowship training in skull base surgery and hydrocephalus at the Cambridge University Academic Neurosurgery Unit and in paediatric neurosurgery at Hôpital Necker Enfants-Malades in Paris.

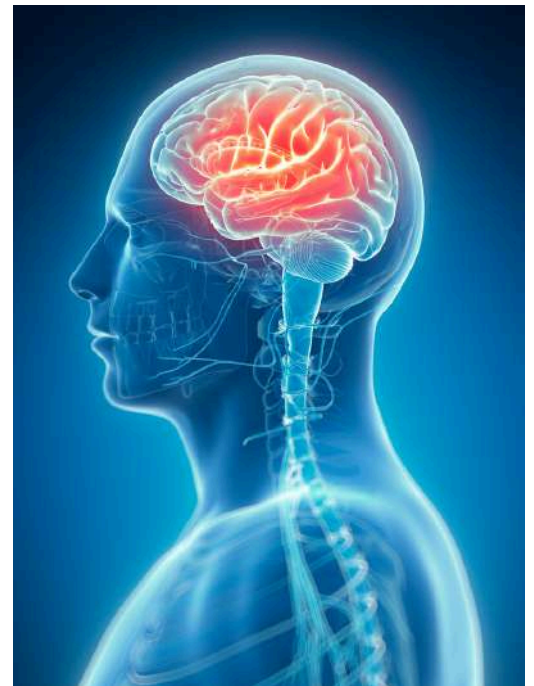
Dr Wood is actively involved in medical research and has presented nationally and internationally at scientific meetings and is an author and coauthor of many medical research papers.

Outside of medicine, Dr Wood holds a Commercial Pilot's Licence and flies his own plane regularly for business and pleasure. When his feet are on the ground, Dr Wood enjoys cycling and running and has completed marathons in London, Paris, Gold Coast, Sydney, and New York. He is also Co-Owner and Distiller at Kitty Hawk Distillery in Brisbane.



## Dr Wood's Specialities

- Paediatric Neurosurgery
- Hydrocephalus
- Endoscopic Neurosurgery
- Foetal Neurosurgery for Spina Bifida
- Minimally Invasive Spinal Surgery
- Epilepsy Surgery
- Tumours – of the brain, spine, spinal cord, and peripheral nerves
- Spinal Injuries – ruptured discs, sciatica, stenosis, trauma, low back pain, radiculopathy, and spinal cord and nerve root compression
- Musculoligamentous Spine Injuries
- Head, Brain, and Skull Trauma
- Haemorrhagic Stroke
- Skull Base Neurosurgery



Cover

**Bill Hooper**  
REAL ESTATE

Specialising in Property Management and Sales  
in the greater Mount Gravatt Area

Call Bill Hooper today on 3349 8844

Bill Hooper Real Estate is a Proud Sponsor of  
Mount Gravatt Men's Shed





# Art / Painting Group



James Mahara



James and Matthew in a beach chair at Mooloolaba Beach



Matthew Tarrant



Lionel Armitstead



Ross Howard



Gavin Taylor



# Welfare



Welfare Committee

L-R Steve Fluerty, Howard Groffman, Michael Hayes, Ted Sanders, Geoff Coc, Ian Svensson, Bruce Stafford

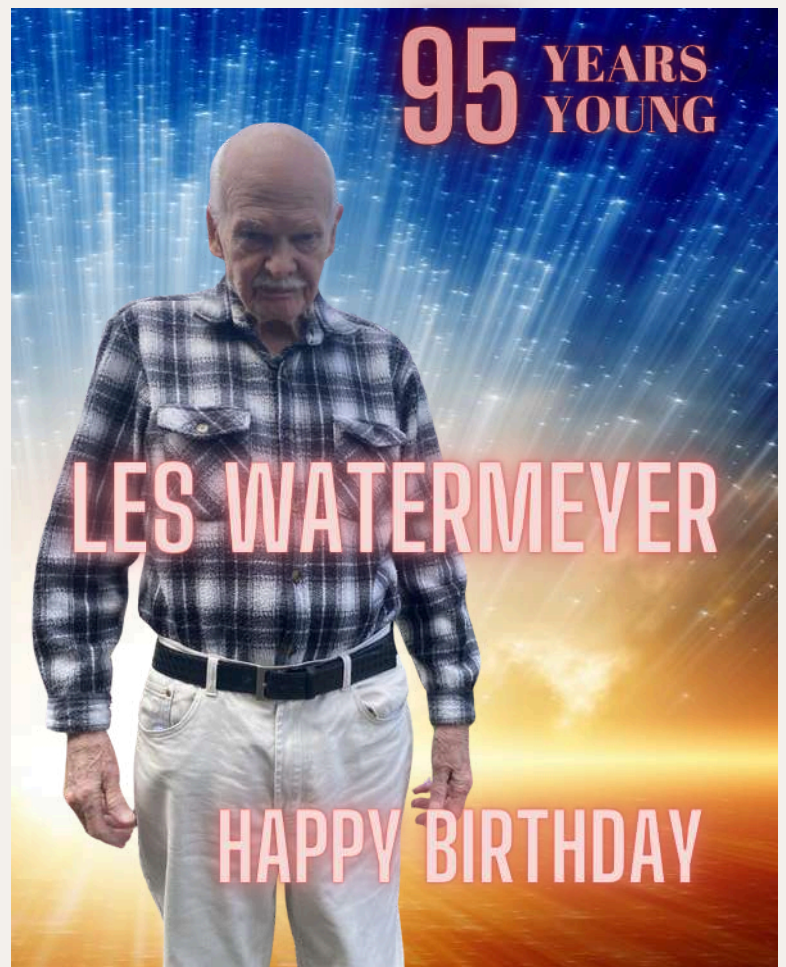
It has been awhile since welfare has added anything to the newsletter, so here is a general update on Welfare. First of all, the Welfare team consists of ten members. Steve Fluerty Coordinator / Bruce Stafford assistant Coordinator / then we currently have three teams, team one is Ted Sanders Reuben Egan Charles Trevor, team two Howard Groffman Neil McPhail, team three Ian Svensson Geoff Cox. The final member who has only just joined is Michael Hayes who will fill a special role within the group.

I would like to take this opportunity to thank all the members, for their continued participation and input into guiding the future development of Welfare, without them Welfare would struggle to function effectively. Some changes to how Welfare operates is currently being developed, to provide members with more help and information on what is available to them, and how to access same. Hopefully everything will be available in the new year.

Remember for anything to do with your health, be it medical or mental the best place to seek help is your GP early intervention creates a better and quicker outcome.

I would like to thank you all, for the support and help that you provide to myself and the rest of welfare members.

Steve Fluerty.



Les is our oldest Member No.45. He joined the shed on 17/5/2010. Les enjoys a chat and asking questions.



# Father's Day Event

Sarge Wilkens



Ron and Sarge proudly represented the Men's Shed again this year at the Brisbane Christian College Pre-Prep Father's Day morning making the event extra special for the children and their families. Continuing their tradition of craftsmanship and community spirit, Ron and Sarge masterfully created ninety wooden boats for the children to assemble with their dads.

These three-level boats were made using recycled timber and off-cuts, demonstrating a commitment to sustainability. Each piece was carefully cut and sanded by hand, a testament to the dedication and skill of these Men's Shed members. This year, Ron and Sarge introduced a new element to their craft: they tried a natural beeswax polish, ensuring that the pieces were safe for children to handle while giving the boats a beautiful, natural finish.

Beyond the boat-building activity, Ron and Sarge took the opportunity to connect with the families at this cherished community event. Many dads and granddads showed a keen interest in the work of the Men's Shed, taking flyers to learn more about the organisation's contributions and activities.

This year held a special significance for Sarge, who was delighted to share the experience with his youngest grandson. Sarge's grandson was proud seeing his Pa in action, leading the boat-building activity.

Families and the college expressed their heartfelt appreciation and amazement at the effort Ron and Sarge put into creating these boats. Their hard work not only provided a memorable activity for the children and their fathers but also strengthened the sense of community at Brisbane Christian College. The dedication of Ron and Sarge serves as an inspiring reminder of the impact that skilled craftsmanship and volunteer spirit can have on bringing people together.





The MGMS Native Bee Group has made some hive boxes for sale. A finished box is shown in the photograph below. The cost is \$138 for a box.



## Following are the parameters of the design of the hive boxes.

- The design is suitable for splitting an existing hive or for an education.
- The size and volume are similar to the standard OATH hive design that is the most commonly used design.
- Timber – 30 mm suitable ply giving greater insulation.
- Split plates and a base plate are included.
- Drain, breather hole, and entry tube.
- Honey super and lid.
- The boxes are painted.
- A pin on each segment shows the back of the boxes to aid alignment if they are disassembled.
- A roof is included.

Sincere thanks to Gordon Lyell for leading the project and contributing significantly and also to Bol Dul and Terry Macaulay for the work they undertook in the construction.



# Chess Group

Alan Highman

This month we had a couple of new players join us for a game. We hope they become regulars. One of our players is away for 6 weeks. He has jury duty, then he is off to the U.K., and to top it off a holiday in Japan. Isn't it fun to be retired? 😊

We would love to know how many of our fellow shedders try to solve our monthly chess puzzle. They can provide a bit of a challenge although last month's puzzle was an easier one.

Last month's puzzle solution:

1. R-h8 NxR
2. Q-h8 KxQ
3. R-h5 K-g8
4. B-h6#

(Notation symbols: + check; ++ double check; # mate)

This month's puzzle – white to move and mate in three (3).

Good luck in solving.



## Elgin Area Men's Shed - USA



Cover

I wanted to visit a Men's Shed while on our recent trip. The Elgin Area Men's Shed, west of Chicago, had a meeting day while we were there. After a 90 minute train ride Kay and I were met by Paul Reardon who gave us a short tour of the city which is famous for wristwatches. The Shed is underneath a rental property and the space is generously donated by the owner. About 12 members turned out to meet the guy from Australia with coffee, donuts and homemade cakes.

Greg Self  
0414 630754



Australian Government

**BUILDING OUR FUTURE**



Queensland  
Government

Mount Gravatt Men's Shed Inc.

Proudly supported by



Dedicated to a better Brisbane





**...FRIENDLY PERSUASION HATH ITS OWN REWARD**

**"IT JUST GOES TO SHOW MEN...IT PAYS TO STAND BETWEEN A POLITICAL PARTY AND THE BALLOT BOX!"**

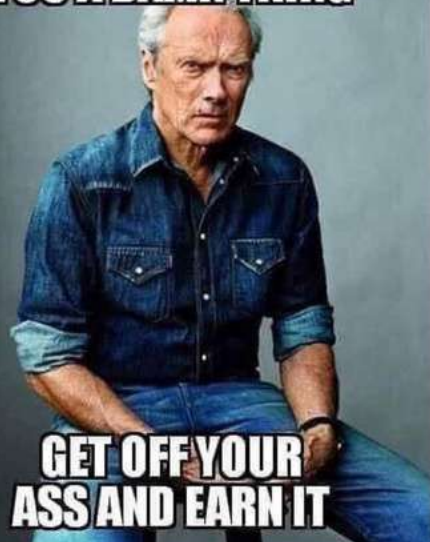
**Good People Still Exist**



**A Humble Man Washing Milk Before Selling It**

**IF CLOWNS ATTACK GO FOR THE JUGGLER**

**NO ONE OWES YOU A DAMN THING**



**GET OFF YOUR ASS AND EARN IT**







# MUSIC GUITAR GROUP

*Terry Thomson - Leader*

## “The Shed Tones Flying the MGMS Flag”



The “Shed Tones” (above) were due to perform at “Greenleaves Retirement Village” at 91 Tryon Street Upper Mt Gravatt on Thursday morning 22nd August at 10.00am. However the flu season had something to do with this. Because of this all of our main singers (Jack and Hugh) were out of action with the dreaded lurgy. They had no voice and any chance of hitting the high or low notes would not be achievable and so only Laurie and Basil would have to pick up the load. So if we were unable to perform and give a concert worthy of the standard the “Shed Tones” are capable of and demand and the audience expect it has been decided that the only thing to do is postpone to another date. We can work on this later but a Thursday in October has been suggested. I have spoken with Margaret from Greenleaves and she understands the situation, is disappointed but is looking forward to when we are all fit and ready to play in the future.



The photo above shows the group performing at an early “Fathers Day” event at the Mt Gravatt Bunnings Store Creek Road and Wecker Road on Thursday night of 29th August playing from 17.00 hrs – 19.00 hrs. From the left is Laurie O'Brien and guard dog Elle, Kornel, Dave Williamson, Basil Wood, Paul Cusack, Willie Seeto and Hugh Smith. The boys played many of their songs for the audience and represented the MGMS as usual in fine fashion.





The photo show the group performing on the Wednesday morning of the 11th September. As Jack said “Well it was just four of us who made the gig today for the Coorparoo Probus Club at the Holland Park Sports Club. Basil Wood, Kornell, Dave Richardson and myself, Jack Files flew the banner for the MGMS ‘Shed Tones’ for close to an hour as part of the Probus Club’s 40th Anniversary celebrations. I didn’t get the chance to count numbers but their current membership stands at over 100 and most seemed to be in attendance today. We were able to showcase the instrumental talents of Basil and Kornell a little more than usual to give the sole vocalist a chance to rest his vocal chords. We also included three numbers where we looked to the audience to join in at certain intervals. These were ‘Itsy Bitsy Teenie Weenie’, Seven Little Girls’ and “Sweet Caroline” which was our final song and really got the joint jumpin’. We also included two medleys of well-known sing-a-long songs, for which our liaison person MH (not sure if she wanted her full name in the newsletter) had printed song sheets. These seemed to go over well with most joining in. We certainly missed those members who for a range of reasons could not make it today including Terry our usual Master of Ceremonies but as it turned out things would have gotten very squ...ee...zy in our designated corner of the room if many more had been present. We wish Terry all the best with his ongoing recovery and hope to have him back with us very soon”.

The “Shed Tones” have (to date) two upcoming concerts the first one is (the previously postponed) at “Greenleaves Retirement Village” at 91 Tryon Street Upper Mt Gravatt sometime in October with the date to be finalised.

The second booking is for an early “Christmas” event at the Mt Gravatt Bunnings Store Creek Road and Wecker Road on a Thursday night in December playing from 17.00 hrs – 19.00 hrs.

To the 2024 Guitar Learner Group - don’t despair just hang in there it is only a minor disruption to the program and we will recommence the lessons as soon as possible. In the mean time it may be of some benefit to join in with one of the other groups or the JAM group on Tuesday mornings.

*Jack Files*







# Photography Group



Visit to Daisy Hill Conservation Park and Lake Dennis, Daisy Hill

3rd September 2024

Link to all Photos <https://www.mtgravattmensshed.org.au/copy-of-history>



Lionel Armitstead



Alan Sanders



Lloyd Akeroyd



Keith Cordwell



Wayne Hansen



Baska Desha



Alan Sanders



Alan Sanders



Lionel Armitstead



Baska Desha



Keith Cordwell



# Social Meeting

2nd September 2024

## President's Report: Peter Tyley

The shed is like a second family. Please get in the spirit and join in and volunteer to help in any way you can.

All requirements from the Showground Trust have been met for our proposal to extend westward.

## Secretary's Report: Neville O'Brien

MGMS members FY 24/25 as of 31 August 2024

MGMS EOY 23/24 Other Members

Awaiting response (non-financial)

23/24 Renewed 246; New Members 14

Patrons 3; Life Members 14 = Total 278

Resigned 6

Membership closed on August 31. If unpaid, you are now a visitor who can come to the Shed Rec Room twice BUT not the workshop.

Shed Annual General Meeting is being held on November 4 at 10:30 am

- Nomination forms for the President, Treasurer & Management Committee will be on the Shed emails & in the Shed Office on September 12. Please consider nominating!
- AGM Area activity reports needed

## Shed's 2024 CHRISTMAS Cubby House Raffle

- Tickets are \$2 each or a book of 5 is \$10. Please sell a book or two.
- if you have a book already, please return when sold with the \$\$ to the Shed Office and help keep costs down.

## Building & Grounds: Dave Tate

Forty-seven of the hundred books of tickets for the Cubby House Raffle have now been returned sold. Still a lot outstanding.

Volunteers are required to assist with the sale of tickets at the Showground weekend markets. Please call Dave (0438 178 865) or Bart (0428 553 566) if you can help.

## Community Projects: Bart McKnight

Enquiries at Bunnings to also sell tickets.

The Girl Guides membership is increasing and they require the use of their second hut which the Shed is using for storage. The purchase of two containers - one for general storage and the other for Welfare equipment is in the pipeline. A new solar light has been installed in the shed entry for night events at the shed.



Peter Tyley with Guest Speakers, Luke and Jocelyn from the SCAM TEAM.

## Workshop: Fred Darvill

Clean-up continues – one area at a time.

Hammer handles of different sizes are available for members for free – See Lloyd

## WIP Projects

- 2 Mud Kitchens
- Mahjong tile holders
- Mahjong tile boxes
- Cutting boards
- Stem Project ( Pipes and connectors )
- Plaques for Griffith Uni
- Rainbow Toys
- 3 legged tables
- Lamp shade

## Recently Completed Projects

- School bench restoration
- Mahjong holder (5 sets)
- ETG Cabinet
- Charcuterie Boards

## Emerging Technology

All areas are well supported.

- 3d Printer is churning out parts for the metal shop.
- CNC has had its bed levelled and is ready to do larger jobs like the Multi Function Table tops.
- Laser - not much happening while Greg Self has been away however there are a few jobs lined up for when he returns.

**“Free Cad” training will start mid September – Sign up if you are interested**



### Music Report: Basil Wood

Terry is in hospital after a heart attack and is being released possibly today. The group will be playing at the sausage sizzle at Bunnings and for the Probus Group later this month.

### Travel Group: Kevin Schneidewin

A car rally to the Brew Dog distillery at Murarrie was a very successful outing with about twenty people enjoying a great day out.

Bus trip Gold Coast Auto Museum 25/10. This trip has been booked and further details will be available in due course.

Jondaryan Woolshed Camp 28/10-3/11- anyone interested contact Kevin.

### Ukelule Group: Tony G

Jam every Friday. Highly recommend Paul and Neil are the tutors.

Photography Group: Lionel Armitstead

Photo shoot at Daisy Hill Conservation Park is organised for 3rd September. All welcome.

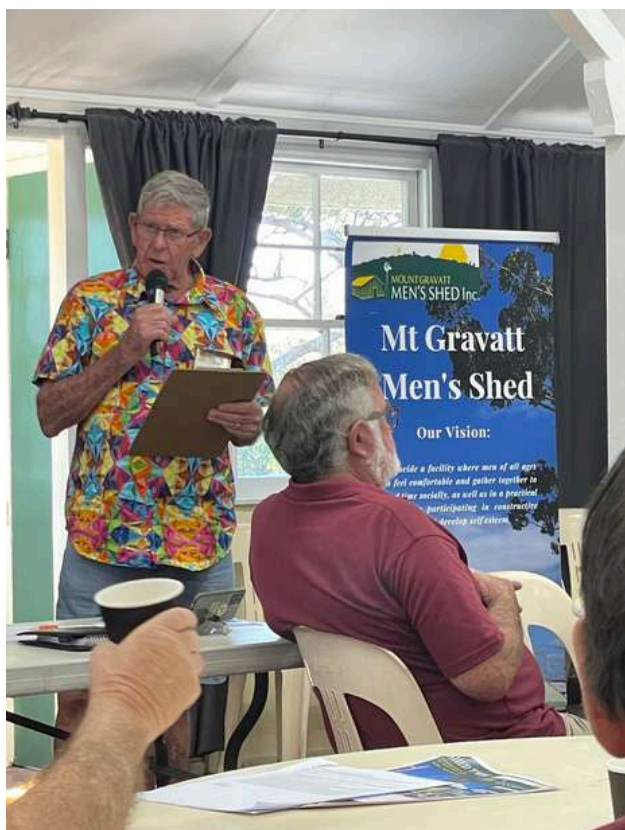
Membership: Tony G

### Office: Jim Wiseman

Volunteers are desperately needed to keep the office operating. If the office does not open neither does the shed so please assist even for half a day if you can.

### Social Meeting: Brian Wheeler

To increase numbers Brian asked for a show of hands which members present would be prepared to bring a member to next month's meeting. The response was very, very disappointing.



Steve Fluerty

### Welfare: Steve Fluerty

- Busy, yes it has been a busy month, helping Lionel with a grant application as well as having a follow up meeting with Leona and Simon from Cares Qld Aust. Who are local area coordinators community and mainstream, partners for the NDIS. We covered a range of topics and they were impressed with what we have in place at the shed to accommodate disadvantaged persons.

- You might be wondering what this shirt is about. It's a conversation starter for RU OK day which will be held on Thursday 12th September. I was hoping to have a morning tea or a talk on the day, but there was no room in our calendar, so instead I would like you to wear a loud shirt to the shed on the day, you never know it might just help someone.

Mental Health Week is being held from 5th - 13th October

- Terry Thompson, Terry was taken to Greenslopes Private Hospital on Thursday 22nd August suffering chest pains, he had an angiogram the next day Friday to insert stents, couldn't be done so on Saturday he had a quadruple bypass, spent a few days in ICU then CCU.

- Passing of Allan Waller Member # 190. Allan passed away unexpectedly at home on Friday 9th August the day following his 54th wedding anniversary. He was an active member of our leather group. he joined the shed on 8th August 2012. He also helped as a member of the fishers of men, he was member # 1 of the Historic Commercial Vehicle Ass. Of Qld, and a member of the Austin motor vehicle club. May he rest in peace. Stand for 1 minutes silence.

- Birthdays. We have 23 birthdays this month of financial members and 7 unfinancial members. Age range 51 – 95. Les Watermeyer is our oldest member. Our 2nd eldest member will turn 95 later this year.

- Newsletter I have not paced a report in the newsletter for a while, each month the date for cut off appears before I have put pen to paper hopefully it won't continue.

- Lastly welfare, well the time has come to shake welfare up, and provide more than we currently have to offer. I need your help to do this, we have tried various ways to create a buddy system, Failure transportation Failure. We will try again.



## Treasurer's Report: John Wild

At the September Social morning our Treasurer, John Wild, presented reports for the month of August 2024. These reports were subsequently tabled and ratified at the Management Committee meeting on 11th of September.

Gross surplus from normal Trading \$18,423. Grant Income and Expenditure was then taken into account leaving a Net surplus from overall operations \$20,235.

The major normal income earners were as follows:

- Membership renewals \$14,414
- Cash Card \$2,675
- Raffles (mainly Cubby House) \$3,041
- New Memberships \$1,055
- Other \$9,278
- Total Income \$30,463

The Major normal expenditure items were as follows:

- Accounting/Audit \$900
- Morning tea supplies \$990
- Insurance \$2,230
- Computer software \$1,058
- Other \$7,920

Total Expenditure \$12,040

Total Bank Deposits including Future Fund of \$35,118 = \$194,242

Total Net Assets including Buildings Equipment & Tools = \$843,630

John also advised the meeting that the audit work has been completed and the draft Financials are ready for approval by the Management Committee prior to the AGM.

Other items were the work being carried out on the new lathe & air filters as well as other Grant applications.

**Proof cats don't always land on their feet.**





# HUMOUR



A pure-bred



Asked my husband to dry the dishes... 😞





Holidaymakers on the Bruce Highway!



When I was your age, we had to walk to the TV to change the channel.

**Bannanarama named as the support group for Oasis on their forthcoming tour**

**'A SHOT OF WHISKEY'**  
In the old west a .45 cartridge for a six-gun cost 12 cents, so did a glass of whiskey. If a cowhand was low on cash he would often give the bartender a cartridge in exchange for a drink. This became known as a "shot" of whiskey.



Cover





October 2024

Saturday 5 October NB# 2:45 for 3 pm: Arvo Entertainment Group

Monday	Tuesday	Wednesday	Thursday	Friday
<b>September 30</b> 8:00 Woodturning 8:00 Own woodwork 9:00 Metal scrolling 9:00 Cards 9:00 Chess 12:00 Toy-making <b>12:30 Emerging Technologies</b>	<b>1</b> 8:30 Leatherwork 8:00 Guitar lessons (2015/18/19/20) 8:00 Own woodwork 8:30 Guitar (2021-22) 10:00 Jam session 12:30 Woodcarving 12:30 Guitar (2024) 1:00 HeartFIT	<b>2</b> 8:00 Intermediate woodwork 9:00 Writers 9:30 Emerging technologies (Vcarve & CNC router) 12:00 Woodturning	<b>3</b> 8:00 Woodturning learners 8:00 Woodworking Introduction 9:00 Cartooning 12:45 Carpet Bowls	<b>4</b> 8:00 Small engines 8:00 Scroll-saw 9:00 Art/painting 12:00 Ukulele Jam 1:00 Welding 1:00 HeartFIT (Shed Rec Rm)
<b>7</b> Shed closed King's birthday public holiday	<b>8</b> 8:30 Leatherwork 8:00 Guitar lessons (2015/18/19/20) 8:00 Own woodwork 8:30 Guitar (2021-22) 10:00 Jam session 12:30 Woodcarving 12:30 Guitar (2024) 1:00 HeartFIT	<b>9</b> 8:00 Intermediate woodwork <b>9:00 Welfare</b> 9:00 Writers 9:30 Emerging technologies (Vcarve & CNC router) 12:00 Woodturning <b>1:00 Management meeting</b>	<b>10</b> 8:00 Woodturning learners 8:00 Woodworking Introduction 9:00 Cartooning <b>10:30 Cooking</b> 12:45 Carpet Bowls	<b>11</b> 8:00 Small engines 8:00 Scroll-saw 9:00 Art/painting 12:00 Ukulele Jam 1:00 Welding 1:00 HeartFIT (Shed Rec Rm)
<b>14</b> <b>10:30 Social Meeting</b> Community hall 10:30 for 11.00 \$8 for lunch	<b>15</b> 8:30 Leatherwork 8:00 Guitar lessons (2015/18/19/20) 8:00 Own woodwork 8:30 Guitar (2021-22) 10:00 Jam session 12:30 Woodcarving 12:30 Guitar (2024) 1:00 HeartFIT	<b>16</b> 8:00 Intermediate woodwork 9:00 Writers 9:30 Emerging technologies (Vcarve & CNC router) <b>10: Travel group</b> Broadwater Park 12:00 Woodturning	<b>17</b> 8:00 Woodturning learners 8:00 Woodworking Introduction 9:00 Cartooning 10:00 Native Bees 12:45 Carpet Bowls <b>1:00 Photography</b>	<b>18</b> 8:00 Small engines 8:00 Scroll-saw 9:00 Art/painting 12:00 Ukulele Jam 1:00 Welding 1:00 HeartFIT (Shed Rec Rm)
<b>21</b> 8.00 Induction 8:00 Woodturning 8:00 Own woodwork 9:00 Metal scrolling 9:00 Cards 9:00 Chess <b>10-30 Sausage sizzle</b> Guest Speaker, \$5 12:00 Toy-making	<b>22</b> 8:30 Leatherwork 8:00 Guitar lessons (2015/18/19/20) 8:00 Own woodwork 8:30 Guitar (2021-22) 10:00 Jam session 12:30 Woodcarving 12:30 Guitar (2024) 1:00 HeartFIT <b>1:00 B&amp;G Meeting</b>	<b>23</b> 8:00 Intermediate woodwork 9:00 Writers 9:30 Emerging technologies (Vcarve & CNC router) 10:30 Cooking 12:00 Woodturning <b>2:30 WOC meeting</b>	<b>24</b> 8:00 Woodturning learners 8:00 Woodworking Introduction 9:00 Cartooning <b>10:30 Cooking</b> 12:45 Carpet Bowls <b>1:00 Fishing</b>	<b>25</b> 8:00 Small engines 8:00 Scroll-saw 9:00 Art/painting 12:00 Ukulele Jam 1:00 Welding 1:00 HeartFIT (Shed Rec Rm)
<b>28</b> 8:00 Woodturning 8:00 Own woodwork 9:00 Metal scrolling 9:00 Cards 9:00 Chess 12:00 Toy-making <b>12:30 Emerging Technologies</b>	<b>29</b> 8:30 Leatherwork 8:00 Guitar lessons (2015, 2019, 2020) 8:00 Own woodwork 8:30 Guitar (2021-22) 10:00 Jam session 12:30 Woodcarving 12:30 Guitar (2018) 1:00 HeartFIT	<b>30</b> 8:00 Intermediate woodwork 9:00 Writers 9:30 Emerging technologies (Vcarve & CNC router) 12:00 Woodturning	<b>31</b> 8:00 Woodturning learners 8:00 Woodworking Introduction 9:00 Cartooning 12:45 Carpet Bowls	<b>1 November</b> 8:00 Small engines 8:00 Scroll-saw 9:00 Art/painting 12:00 Ukulele Jam 1:00 Welding 1:00 HeartFIT (Shed Rec Rm)

"Introduction to Woodworking" 8.00 am to 3.00 pm on Thursdays. The wood-shop area is shared only with the wood-turning group. No other wood-shop activity currently.